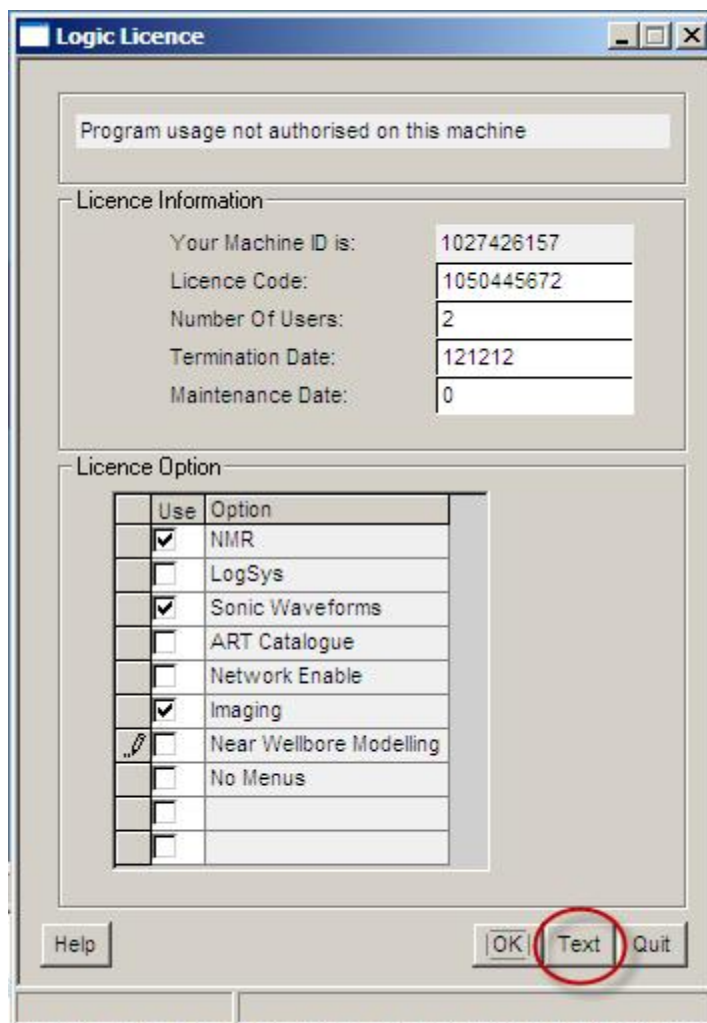


# Installing LogIC



## Standalone PC installation

1. Download the latest version of the program from [www.logicomep.com/downloads.htm](http://www.logicomep.com/downloads.htm).
2. Run the installer
  - a. For Windows XP 32-bit, just follow the prompts
  - b. For later versions of Windows (64-bit, Vista or Windows7) follow the prompts, but when you are asked where to install the program make sure that it goes in a separate folder (e.g. c:\logicomep\logic) NOT into the "Program files" folder structure.
3. The installation creates a shortcut to LogIC in the list of programs in your Windows Start Menu. Use this to start LogIC. You will see a licence screen:



Click the "Text" button and a text editor window will be displayed like this:

```
LogicLicence.txt - Notepad
File Edit Format View Help
LogICv1.89J07
-----
Program usage not authorised on this machine

Licence Information:
Machine ID      1027426157
Licence Code    1050445672
Users           2
TermDate(ddmmyy) 121212
MaintenanceDate 000000
Maintenanceversion 010910
Program Path    c:\duk6

Options:
v      NMR
v      Sonic waveforms
v      Imaging

Current Users:
kenny  since(GMT):05/01/2011  - 09:36:00
```

Either (a) swipe the text, and copy it into an e-mail, or (b) use File → Save to save the text file and attach it to an email. Send the e-mail to [support@logicomep.com](mailto:support@logicomep.com). We will mail back the codes to type into the licence screen (UK working hours apply!).

If, for some reason, a text file is not displayed, return to the licence screen, press “Alt+PrtSc” and paste the image of the licence screen itself into the e-mail.

You can then quit the program until you receive your codes. When you receive them restart LogIC, enter the numbers and click OK. The licence screen will disappear and the program will start.

If the licence screen does not disappear, click the “Text” button again and e-mail us the new details so that we can confirm that everything has been entered correctly.

### Important note

Some new PCs do not have Microsoft’s latest development libraries installed as standard. This causes a variety of errors when you try to start LogIC, the most common of which looks something like this:



It will probably have an error number of “0xc0000034” or “0xc0001502”. If this happens look in the LogIC installation folder for a program called “vcredist\_x86.exe”. Run this and then try LogIC again. If this fails to solve the problem, e-mail [support@logicomep.com](mailto:support@logicomep.com) for further guidance.

## Installation by an Administrator

If your IT dept requires an administrator to perform the installation, a key file will be installed in the administrators area of your PC. This file is called LogIC.INI and it will need to be copied into the eventual users area. The problem will show itself with a message "Program environment not set". If you get this message, ask the person that did the installation for you to contact us for detailed guidance on how to fix it.

## Local Area Network Installation

For a Local Network installation, you will need to download the small "network client installer for LogIC" (from [www.logicomep.com/downloads.htm](http://www.logicomep.com/downloads.htm)). The process is similar except that the main LogIC installer is run to a shareable folder on the server and the "network client installer" is run on your PC, but directed to the same shareable folder. It is best to involve your IT dept in this process. Ask them to contact [support@logicomep.com](mailto:support@logicomep.com) and we will send more detailed instructions.

## Wide Area Network Installation

For a Wide Area Network installation, the process is similar except that the main LogIC installer is run on the server AND each individual PC. Then a configuration file needs to be edited on each PC. It is best to involve your IT dept in this process. Ask them to contact [support@logicomep.com](mailto:support@logicomep.com) and we will send more detailed instructions.

Logicom E&P Limited  
Westcott Farm House  
Ashendon Road  
Westcott  
Aylesbury  
HP18 ONX

Tel +44 (0)1296 655511  
[www.logicomep.com](http://www.logicomep.com)